




40 YEARS OF
FinOlex
PIPES



SWR IS 13592 
PIPES & FITTINGS
PRODUCT CATALOGUE



 1800 200 3466 |  finolexpipes.com

SWR PIPES & FITTINGS

Finolex SWR pipes are specially designed and manufactured using high grade raw material and are an ideal solution for efficient removal of waste in the drainage system. SWR pipes and fittings are used for non-pressure plumbing applications, such as transportation of soil, waste and rainwater, non-pressure industrial drainage applications, and waste discharge systems in residential and commercial complexes, resorts, and hospitals.

Finolex SWR system is an ideal replacement for CI and GI piping systems because it is lightweight, economical, non-corrosive and UV stabilised, which makes it highly durable. It offers extreme climate resistance and a smooth inner surface to prevent clogging.

Our stringent quality assurance approach across all stages of manufacturing gives the product a high-degree of reliability making Finolex SWR pipes a preferred choice of leading MEP consultants, architects, builders, plumbing contractors, plumbers, and quality-conscious people across the country. SWR pipes are available in various sizes ranging from 40 mm to 160 mm. These pipes are manufactured as per IS 13592 and are offered with Integrated Ringfit and Selfit socket systems.

SWR pipes are offered in two primary types; type A for rainwater and vents, and type B for soil and waste discharge. Fittings are available in various sizes from 40 mm to 160 mm in Selfit and integrated ring type sockets. Fittings are manufactured as per IS 14735.

SWR PIPES WITH INTEGRATED RINGS

Conforming to IS 13592

Finolex SWR pipes support easy installation as the integrated ring, which is pre-fitted in the socket groove, remains permanently positioned. The joint is made simply by pushing the spigot end into the socket end, without the use of any solvent cement. Finolex lubricant should be used for easy insertion. The ring forms a leak proof joint and absorbs the linear expansion and contraction, keeping the seal intact.

DIMENSIONS OF SWR PIPES WITH INTEGRATED RINGS

Nominal Diameter (mm)	Nominal Diameter (inch)	Mean Outside Diameter of Pipe (mm)		Wall Thickness (mm)		Std. Length (meter)
		Min	Max	Min	Max	
Type A						
75	2½"	75.0	75.3	1.8	2.2	3,3.66,6
90	3"	90.0	90.3	1.9	2.3	3,3.66,6
110	4"	110.0	110.4	2.2	2.7	3,3.66,6
160	6"	160.0	160.5	3.2	3.8	3,6
Type B						
75	2½"	75.0	75.3	3.2	3.8	3,3.66,6
90	3"	90.0	90.3	3.2	3.8	3,3.66,6
110	4"	110.0	110.4	3.2	3.8	3,3.66,6
160	6"	160.0	160.5	4.0	4.6	3,6

DIMENSIONS OF SWR PIPES WITH INTEGRATED RINGS

Nominal Diameter (mm)	Nominal Diameter (inch)	Mean Outside Diameter of Pipe (mm)		Wall Thickness (mm)		Std. Length (meter)
		Min	Max	Min	Max	
110	4"	110.0	110.4	1.6	1.9	3

CUT PIECES IN SWR PIPES WITH INTEGRATED RINGS - TYPE A

Size (mm)	Size (inch)	Std. Length per piece (ft)
75	2½"	2
75	2½"	3
75	2½"	4
75	2½"	6
75	2½"	9
75	2½"	10
75	2½"	20
90	3"	2
90	3"	3
90	3"	4
90	3"	6
90	3"	10
90	3"	20
110	4"	2
110	4"	3
110	4"	4
110	4"	6
110	4"	9
110	4"	10
110	4"	20
160	6"	2
160	6"	3
160	6"	4
160	6"	6
160	6"	10
160	6"	20

CUT PIECES IN SWR PIPES WITH INTEGRATED RINGS - TYPE B

Size (mm)	Size (inch)	Std. Length per piece (ft)
75	2½"	1.5
75	2½"	2
75	2½"	3
75	2½"	4
75	2½"	6
75	2½"	10
75	2½"	20
90	3"	2
90	3"	3
90	3"	4
90	3"	6
90	3"	10
90	3"	20
110	4"	1.5
110	4"	2
110	4"	3
110	4"	4
110	4"	6
110	4"	9
110	4"	10
110	4"	20
160	6"	2
160	6"	3
160	6"	4
160	6"	6
160	6"	10
160	6"	20

Note: This cut piece length can be made available with single socket (S/S) and double socket (D/S).

SWR SELFIT PIPES

Conforming to IS 13592

Finolex Selfit SWR pipes are manufactured in a way that one end of the pipe is plain, while the other is self-socketed and facilitates ease in jointing with the use of Finolex Solvent Cement.

DIMENSIONS OF SWR SELFIT PIPES

Nominal Diameter (mm)	Nominal Diameter (inch)	Mean Outside Diameter of Pipe (mm)		Wall Thickness (mm)		Std. Length (meter)
		Min	Max	Min	Max	
Type A						
75	2½"	75.0	75.3	1.8	2.2	3,6
90	3"	90.0	90.3	1.9	2.3	3,3.66,6
110	4"	110.0	110.4	2.2	2.7	3,3.66,5,6
160	6"	160.0	160.5	3.2	3.8	3,6
Type B						
40	1½"	40.0	40.3	3.2	3.8	3
75	2½"	75.0	75.3	3.2	3.8	3,6
90	3"	90.0	90.3	3.2	3.8	3,6
110	4"	110.0	110.4	3.2	3.8	3,3.66,5,6
160	6"	160.0	160.5	4.0	4.6	3,6

CUT PIECES IN SWR SELFIT PIPES - TYPE A

Size (mm)	Size (inch)	Std. Length per piece (ft)
75	2½"	2
75	2½"	3
75	2½"	4
75	2½"	6
75	2½"	10
90	3"	2
90	3"	3
90	3"	4
90	3"	6
90	3"	10
90	3"	20
110	4"	2
110	4"	3
110	4"	4
110	4"	6
110	4"	10
110	4"	20
160	6"	2
160	6"	3
160	6"	4
160	6"	6
160	6"	10

CUT PIECES IN SWR SELFIT PIPES - TYPE B

Size (mm)	Size (inch)	Std. Length per piece (ft)
75	2½"	2
75	2½"	3
75	2½"	4
75	2½"	6
75	2½"	10
75	2½"	20
90	3"	2
90	3"	3
90	3"	4
90	3"	6
90	3"	10
90	3"	20
110	4"	2
110	4"	3
110	4"	4
110	4"	6
110	4"	10
110	4"	20
160	6"	2
160	6"	3
160	6"	4
160	6"	6
160	6"	10
160	6"	20

Batch number logic:

Year	Month	Day	Mc.No.	Shift
xxxx	xx	xx	xxx	x

For example, the batch number of pipes produced on Mc. no. 20 on 1st June 2021 in the 1st shift will be 202106010201

Note: This cut piece length can be made available with single socket (S/S) and double socket (D/S).



SWR FITTINGS WITH INTEGRATED RINGS AT A GLANCE

IRR (As per IS 14735)

Type of Fittings	Size in mm
COUPLER	75 to 160
BEND 87.5° - PLAIN	75 to 160
BEND 87.5° - DOOR	75 to 160
BEND 45° - PLAIN	75 to 160
BEND - SIDE DOOR LEFT HAND	110
BEND - SIDE DOOR RIGHT HAND	110
TEE - PLAIN	75 to 160
TEE - DOOR	75 to 160
TEE - SIDE DOOR LEFT HAND	75 to 110
TEE - SIDE DOOR RIGHT HAND	75 to 110
CROSS TEE - PLAIN	75 to 160
CROSS TEE - DOOR	75 to 160
CLEANING PIPE	75 to 160
REDUCER	90 to 160
REDUCING TEE - PLAIN	90 to 160
REDUCING TEE - DOOR	90 to 160

IRR (As per IS 14735)

Type of Fittings	Size in mm
REDUCING TEE - SIDE DOOR LEFT HAND	110
REDUCING TEE - SIDE DOOR RIGHT HAND	110
SWEPT TEE - PLAIN	75 to 160
SWEPT TEE - DOOR	75 to 160
REDUCING SWEPT TEE - PLAIN	110 X 75
REDUCING SWEPT TEE - DOOR	110 X 75
SINGLE Y - PLAIN	75 to 160
SINGLE Y - DOOR	75 to 160
SINGLE Y - SIDE DOOR LEFT HAND	110
SINGLE Y - SIDE DOOR RIGHT HAND	110
DOUBLE Y - PLAIN	75 to 160
DOUBLE Y - DOOR	75 to 160
REDUCING Y - PLAIN	110 to 160
REDUCING Y - DOOR	110 to 160

SWR SELFIT FITTINGS AT A GLANCE

SELFIT (As per IS 14735)

Type of Fittings	Size in mm
COUPLER	63 to 160
BEND 87.5° - PLAIN	50 to 160
BEND 87.5° - DOOR	50 to 160
BEND 45° - PLAIN	40 to 160
TEE - PLAIN	50 to 160
TEE - DOOR	50 to 160
TEE - DOOR DOUBLE SOCKET	63 to 110
CROSS TEE - PLAIN	75 to 110
CLEANING PIPE	75 to 160
REDUCER	110 to 160
REDUCING BUSH	160 X 110
REDUCING TEE - PLAIN	90 to 160
REDUCING TEE - DOOR	90 to 160
SWEPT TEE - PLAIN	75 to 110
SWEPT TEE - DOOR	75 to 110
SINGLE Y - PLAIN	63 to 160
SINGLE Y - DOOR	63 to 160
DOUBLE Y - PLAIN	75 to 160
DOUBLE Y - DOOR	160
REDUCING Y - PLAIN	110 to 160
REDUCING Y - DOOR	110 to 160
SQ. GULLY TRAP WITH JALI/ W/O JALI	110
NAHANI TRAP - W/O JALI SINGLE PIECE	110
NAHANI TRAP - W/O JALI SHORT	110
NAHANI TRAP - JALI (Only JALI)	110
PIPE CLIP	75 to 160
VENT COWL	50 to 160
DOOR CAP	75 to 160

SELFIT

Type of Fittings	Size in mm
TEE - PLAIN DOUBLE SOCKET	40 to 110
BEND 45° - DOUBLE SOCKET	75 to 110
BEND DOUBLE SOCKET - PLAIN	40 to 110
BEND DOUBLE SOCKET - DOOR	40 to 110
EQUAL Y - PLAIN	50
EQUAL Y - DOOR	50
REVERSE Y - PLAIN	75
REVERSE Y - DOOR	75
GULLY TRAP - SINGLE	160 X 110
GULLY TRAP - DOUBLE	160 X 110
HEIGHT RISER 6"	110
MULTI FLOOR TRAP WITH JALI	110X75
MULTI FLOOR TRAP WITHOUT JALI	110X75
MULTI FLOOR TRAP SQUARE JALI	110
MULTI FLOOR TRAP 7" HEIGHT	110X75
FLOOR TRAP	110
P - TRAP	75 to 125
Q - TRAP	110 to 125
S - TRAP	110 to 125
WC CONNECTER	110
WC CONNECTER - BEND	125X110
WC CONNECTER - STRAIGHT	125X110
SOCKET PLUG	75 to 110



SWR FITTINGS WITH INTEGRATED RINGS

As per IS 14735



COUPLER

To join two lengths of pipes

mm	75	90	110	160
inch	2½"	3"	4"	6"



BEND 87.5° - PLAIN

To collect wastewater from the internal pipeline and divert it to the main pipeline at an angle of 87.5°

mm	75	90	110	160
inch	2½"	3"	4"	6"



BEND 87.5° - DOOR

To collect wastewater from the internal pipeline and divert it to the main pipeline at an angle of 87.5°. Available with a door for cleaning purposes

mm	75	90	110	160
inch	2½"	3"	4"	6"



BEND 45° - PLAIN

Used as a shoe for a rainwater drainage line and can also provide a 45° turn to the pipeline

mm	75	90	110	160
inch	2½"	3"	4"	6"



BEND - SIDE DOOR LEFT HAND

Available with a door for cleaning purposes. (Left hand)

mm	110
inch	4"



BEND - SIDE DOOR RIGHT HAND

Available with a door for cleaning purposes. (Right hand)

mm	110
inch	4"



TEE - PLAIN

To connect a lateral soil/waste pipe to the main vertical pipe at an angle of 87.5°

mm	75	90	110	160
inch	2½"	3"	4"	6"



TEE - DOOR

To connect a lateral soil/waste pipe to the main vertical pipe at an angle of 87.5°. Available with a door for cleaning purposes

mm	75	90	110	160
inch	2½"	3"	4"	6"



TEE - SIDE DOOR LEFT HAND

Available with a door for cleaning purposes. (Left hand)

mm	75	110
inch	2½"	4"



TEE - SIDE DOOR RIGHT HAND

Available with a door for cleaning purposes. (Right hand)

mm	75	110
inch	2½"	4"



CROSS TEE - PLAIN

To connect two lateral soil/waste pipelines to the main line at an angle of 87.5°

mm	75	90	110	160
inch	2½"	3"	4"	6"



CROSS TEE - DOOR

To connect two lateral soil/waste pipelines to the main line at an angle of 87.5°. Available with a door for cleaning purposes

mm	75	90	110	160
inch	2½"	3"	4"	6"



CLEANING PIPE

Used between a vertical line to facilitate cleaning and pipe maintenance

mm	75	110	160
inch	2½"	4"	6"



REDUCER

To reduce the main line

mm	90X75	110X75	110X90	160X110
inch	3" x 2½"	4" x 2½"	4" x 3"	6" x 4"



REDUCING TEE - PLAIN

To connect a reducing soil/waste pipeline to the main pipeline at an angle of 87.5°

mm	90X75	110X75	160X110
inch	3" x 2½"	4" x 2½"	6" x 4"



REDUCING TEE - DOOR

To connect a reducing soil/waste pipeline to the main pipeline at an angle of 87.5°. Available with a door for cleaning purposes

mm	90X75	110X75	160X110
inch	3" x 2½"	4" x 2½"	6" x 4"



REDUCING TEE - SIDE DOOR LEFT HAND
Available with a door for cleaning purposes. (Left hand)

mm	110X75
inch	4" x 2½"



REDUCING TEE - SIDE DOOR RIGHT HAND
Available with a door for cleaning purposes. (Right hand)

mm	110X75
inch	4" x 2½"



SWEPT TEE - PLAIN
To connect a lateral soil/waste pipe to the main vertical line

mm	75	110	160
inch	2½"	4"	6"



SWEPT TEE - DOOR
To connect a lateral soil/waste pipe to the main vertical line. Available with a door for cleaning purposes

mm	75	110	160
inch	2½"	4"	6"



REDUCING SWEPT TEE - PLAIN
To connect, reduce a lateral soil/waste pipe to the main vertical line

mm	110X75
inch	4" x 2½"



REDUCING SWEPT TEE - DOOR
To connect, reduce a lateral soil/waste pipe to the main vertical line. Available with a door for cleaning

mm	110X75
inch	4" x 2½"



SINGLE Y - PLAIN
To connect a branch soil/waste pipeline to the main vertical pipeline at an angle of 45°

mm	75	90	110	160
inch	2½"	3"	4"	6"



SINGLE Y - DOOR
To connect a branch soil/waste pipeline to the main vertical pipeline at an angle of 45°. Available with a door for cleaning purposes

mm	75	90	110	160
inch	2½"	3"	4"	6"



SINGLE Y - SIDE DOOR LEFT HAND
To connect two lateral soil/waste pipelines to the main vertical line at an angle of 45°. Available with a side door for cleaning purposes. (Left hand)

mm	110
inch	4"



SINGLE Y - SIDE DOOR RIGHT HAND
To connect two lateral soil/waste pipelines to the main vertical pipeline at an angle of 45°. Available with a side door for cleaning purposes. (Right hand)

mm	110
inch	4"



DOUBLE Y - PLAIN
To connect a branch soil/waste pipeline to the main vertical pipeline at an angle of 45°

mm	75	90	110	160
inch	2½"	3"	4"	6"



DOUBLE Y - DOOR
To connect a branch soil/waste pipeline to the main vertical pipeline at an angle of 45°. Available with a door for cleaning purposes

mm	75	90	110	160
inch	2½"	3"	4"	6"



REDUCING Y - PLAIN
To connect a reducing soil/waste pipeline to the main pipeline at an angle of 45°

mm	110X75	160X110
inch	4" x 2½"	6" x 4"



REDUCING Y - DOOR
To connect a reducing soil/waste pipeline to the main pipeline at an angle of 45°. Available with a door for cleaning purposes

mm	110X75	160X110
inch	4" x 2½"	6" x 4"

SWR SELFIT FITTINGS

As per IS: 14735



COUPLER

To join two lengths of pipes

mm	63	75	90	110	160
inch	2"	2½"	3"	4"	6"



BEND 87.5° - PLAIN

To collect wastewater from the internal pipeline and to divert it to the main pipeline at an angle of 87.5°

mm	50	63	75	90	110	160
inch	1½"	2"	2½"	3"	4"	6"



BEND 87.5° - DOOR

To collect wastewater from the internal pipeline and to divert it to the main pipeline at an angle of 87.5°. Available with a door for cleaning purposes

mm	50	63	75	90	110	160
inch	1½"	2"	2½"	3"	4"	6"



BEND 45° - PLAIN

Used as a shoe for a rainwater drainage line and can also provide a 45° turn to the pipeline

mm	40	50	63	75	90	110
inch	1½"	1½"	2"	2½"	3"	4"
mm	140	160				
inch	5"	6"				



BEND 45° - DOUBLE SOCKET

To provide a 45° turn to the pipeline. Sockets are provided at both ends of the bend. Also used as a shoe for a rainwater drainage pipeline

mm	75	110
inch	2½"	4"



BEND DOUBLE SOCKET - PLAIN

To collect wastewater from the internal pipeline and divert it to the main pipeline. Bend is provided with an inner socket at both ends

mm	40	50	63	75	90	110
inch	1½"	1½"	2"	2½"	3"	4"



BEND DOUBLE SOCKET - DOOR

To collect wastewater from the internal pipeline and divert it to the main pipeline. Bend is provided with an inner socket at both ends and is available with a door for cleaning purposes

mm	40	63	75	90	110
inch	1½"	2"	2½"	3"	4"



TEE - PLAIN

To connect a lateral soil/waste pipe to the main vertical pipe at an angle of 87.5°

mm	50	63	75	90	110	160
inch	1½"	2"	2½"	3"	4"	6"



TEE - DOOR

To connect a lateral soil/waste pipe to the main vertical pipe at an angle of 87.5°. Available with a door for cleaning purposes

mm	50	63	75	90	110	160
inch	1½"	2"	2½"	3"	4"	6"



TEE - PLAIN DOUBLE SOCKET

To connect a lateral soil/waste pipe to the main vertical pipe at an angle of 87.5°

mm	40	50	63	75	90	110
inch	1½"	1½"	2"	2½"	3"	4"



TEE - DOOR DOUBLE SOCKET

To connect a lateral soil/waste pipe to the main vertical pipe at an angle of 87.5°. Available with a door for cleaning purposes

mm	63	75	90	110
inch	2"	2½"	3"	4"



CROSS TEE - PLAIN

To connect two lateral soil/waste pipelines to the main line at an angle of 87.5°

mm	75	110
inch	2½"	4"



CLEANING PIPE

Used between a vertical line to facilitate cleaning and pipe maintenance

mm	75	110	160
inch	2½"	4"	6"



REDUCER

To reduce the main line

mm	110X75	110X90	160X110
inch	4" x 2½"	4" x 3"	6" x 4"



REDUCING BUSH

To reduce the internal diameter of fittings

mm	160X110
inch	6" x 4"



REDUCING TEE - PLAIN

To connect a reducing soil/waste pipeline to the main pipeline at an angle of 87.5°

mm	90X75	110X75	160X110
inch	3" x 2½"	4" x 2½"	6" x 4"

**REDUCING TEE - DOOR**

To connect a reducing soil/waste pipeline to the main pipeline at an angle of 87.5°. Available with a door for cleaning purposes

mm	90X75	110X75	160X110
inch	3" x 2½"	4" x 2½"	6" x 4"

**SWEPT TEE - PLAIN**

To connect a lateral soil/waste pipe to the main vertical line

mm	75	110
inch	2½"	4"

**SWEPT TEE - DOOR**

To connect a lateral soil/waste pipe to the main vertical line. Available with a door for cleaning purposes

mm	75	110
inch	2½"	4"

**SINGLE Y - PLAIN**

To connect a branch soil/waste pipeline to the main vertical pipeline at an angle of 45°

mm	63	75	90	110	160
inch	2"	2½"	3"	4"	6"

**SINGLE Y - DOOR**

To connect a branch soil/waste pipeline to the main vertical pipeline at an angle of 45°. Available with a door for cleaning purposes

mm	63	75	90	110	160
inch	2"	2½"	3"	4"	6"

**EQUAL Y - PLAIN**

To connect a branch soil/waste pipeline to the main vertical pipeline at an angle of 45°

mm	50
inch	1½"

**EQUAL Y - DOOR**

To connect a branch soil/waste pipeline to the main vertical pipeline at an angle of 45°. Available with a door for cleaning purposes

mm	50
inch	1½"

**DOUBLE Y - PLAIN**

To connect a branch soil/waste pipeline to the main vertical pipeline at an angle of 45°

mm	75	110	160
inch	2½"	4"	6"

**DOUBLE Y - DOOR**

To connect a branch soil/waste pipeline to the main vertical pipeline at an angle of 45°. Available with a door for cleaning purposes

mm	160
inch	6"

**REDUCING Y - PLAIN**

To connect a reducing soil/waste pipeline to the main pipeline at an angle of 45°

mm	110X75	160X110
inch	4" x 2½"	6" x 4"

**REDUCING Y - DOOR**

To connect a reducing soil/waste pipeline to the main pipeline at an angle of 45°. Available with a door for cleaning purposes

mm	110X75	160X110
inch	4" x 2½"	6" x 4"

**REVERSE Y - PLAIN**

To connect two branches at an inverted angle of 45°

mm	75
inch	2½"

**REVERSE Y - DOOR**

To connect two branches at an inverted angle of 45°. Available with a door for cleaning purposes

mm	75
inch	2½"

**GULLY TRAP - SINGLE**

To prevent foul odours emitted from the sewer from reaching buildings and apartments

mm	160X110
inch	6" x 4"

**GULLY TRAP - DOUBLE**

To prevent foul odours emitted from the sewer from reaching buildings and apartments

mm	160X110
inch	6" x 4"

**SQ. GULLY TRAP - WITH & W/O JALI**

To prevent foul odours emitted from the sewer from reaching buildings and apartments

mm	110	110
	(WITH JALI)	(W/O JALI)
inch	4"	4"

**HEIGHT RISER (6")**

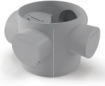
For multiple draining i.e. bathrooms, washbasin, washing machine, and bathtub. It has three additional inlets provided with a socket plug that can be opened as and when required. Used when height adjustments are required

mm	110X75X50	110X50/40
inch	4"x2½"x1½"	4"x1½"/1¼"

**MULTI FLOOR TRAP - WITH JALI**

To drain wastewater from bathrooms/ wash basins and convey to the main pipeline. It prevents odour

mm	110X75	110X75 (NEW)
inch	4" x 2½"	4" x 2½"

**MULTI FLOOR TRAP - WITHOUT JALI**

To drain wastewater from bathrooms/ wash basins and convey to the main pipeline. It prevents odour

mm	110X75	110X75 (NEW)
inch	4" x 2½"	4" x 2½"

**MULTI FLOOR TRAP - SQUARE JALI**

To arrest debris and waste

mm	110
inch	4"

**MULTI FLOOR TRAP - 7" HEIGHT**

For multiple draining i.e. bathrooms, washbasin, washing machine, and bathtub. It has three additional inlets provided with socket plug that can be opened as and when required. It prevents odour

mm	110X75
inch	4" x 2½"

**NAHANI TRAP - W/O JALI SINGLE PIECE**

To drain wastewater from bathrooms, wash basins and convey to the main pipeline. It prevents odour

mm	110X75	110X110
inch	4" x 2½"	4" x 4"

**NAHANI TRAP - W/O JALI SHORT**

To drain wastewater from bathrooms, wash basins and convey to the main pipeline. It prevents odour

mm	110X75	110X90	110X110
inch	4" x 2½"	4" x 3"	4" x 4"

**NAHANI TRAP JALI (ONLY JALI)**

To arrest debris & waste

mm	110
inch	4"

**FLOOR TRAP**

To drain wastewater from the bathroom, washbasins and convey to the main pipeline. It prevents odour

mm	110X63	110X75
inch	4" x 2"	4" x 2½"

**P - TRAP**

To create a water seal and ensure efficient functioning of the drainage system

mm	75x75	110X110	125X110
inch	2½"x2½"	4" x 4"	4½" x 4"

**Q - TRAP**

To create a water seal and ensure efficient functioning of the drainage system

mm	110X110	125X110
inch	4" x 4"	4½" x 4"

**S - TRAP**

To create a water seal and ensure efficient functioning of the drainage system

mm	110X110	125X110
inch	4" x 4"	4½" x 4"

**PIPE CLIP**

To fix/secure the pipeline to a wall or a flat surface

mm	75	90	110	160
inch	2½"	3"	4"	6"

**VENT COWL**

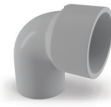
To allow foul gases generated in the system to escape. It is used as a cap on top of the vertical line

mm	50	63	75	90	110	160
inch	1½"	2"	2½"	3"	4"	6"

**WC CONNECTOR**

To connect a WC pan to the soil pipe

mm	110 (1.5 FT)	110 (2.0 FT)
inch	4"	4"

**WC CONNECTOR - BEND**

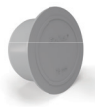
To connect a WC pan to the soil pipe

mm	125X110
inch	4½"X4"

**WC CONNECTOR - STRAIGHT**

To connect a WC pan to the soil pipe

mm	125X110
inch	4½"X4"

**SOCKET PLUG**

To plug the socket end of the pipe and fittings

mm	75	110
inch	2½"	4"

**DOOR CAP**

To close the access opening

mm	75	110	160
inch	2½"	4"	6"

**LIP SEAL (FOR WC CONNECTOR / TRAP)**

Lip Seals are used to provide leakproof joints between the sanitation fixtures and various traps (P, Q and S)

mm	125
inch	4½"

THERMAL EXPANSION

SWR pipes and fittings are generally exposed to the external surfaces and sunlight as they are not concealed. Some places have a large diurnal temperature variation ranging between 5°C to 20°C, which naturally leads to expansion and contraction of pipes. This thermal expansion should be taken into consideration while designing any sanitation system.

As the expansion and contraction mostly occurs in vertical lines, our SWR pipes with integrated rings are the most suitable for a vertical stack. It is necessary to maintain an expansion gap at the rubber ring joints to allow movement of pipes due to thermal expansion.

Please measure the socket length with a measuring tape and make markings along the pipe. During installation, push the pipe firmly into the socket fitted with an integrated ring till the gap between the mark on the spigot and socket is around 10mm, to allow for thermal expansion.

Finolex recommends Selfit jointing for all horizontal wastewater lines. Selfit fittings make the system cost effective, without impairing performance. Horizontal pipes require closer support compared to vertical pipes. Pipe brackets/pipe clips must be used to anchor expansion joints.

PIPE CLIP SUPPORT SPACING DISTANCE

Pipe Size (mm)	75	90	110	160
Spacing For Horizontal Pipe Size (mtrs)	1.0	1.0	1.0	1.2
Spacing For Vertical Pipe Size (mtrs)	1.8	1.8	1.8	1.8

FINOLEX SOLVENT CEMENT & LUBRICANT

SOLVENT CEMENT



PVC-U Solvent Cement for SWR (Selfit) applications (Manufactured as per IS 14182 and meets ASTM D 2564 standard).

ml	100	250	500	1000
Container	Tin	Tin	Tin	Tin

RUBBER LUBRICANT



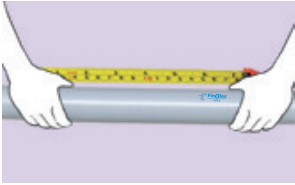
Finolex Rubber Lubricant is used for installation of SWR pipes and fittings with integrated rings.

gms	50	100	250	500	1000
Container	Plastic container				

JOINTING

For Selfit pipes and fittings:

1. Measuring



2. Cutting



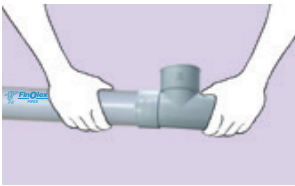
3. Deburring and chamfering



4. Cleaning



5. Check dry fit



6. Solvent cement application



7. Assembly



JOINTING

For pipes and fittings with integrated rings:

1. Measuring



2. Cutting



3. Deburring and chamfering



4. Cleaning



5. Check for integrated ring



6. Lubricant application



7. Assembly



CERTIFICATIONS AND APPROVALS

- Pipes are manufactured conforming to IS 13592 (Bureau of Indian Standards)
- Fittings are manufactured as per IS 14735 (Bureau of Indian Standards)
- Tested and approved by Central Institute of Plastics Engineering & Technology (CIPET)

FEATURES & BENEFITS



UV stabilised



Leak-proof



Non-reactive to acids, alkalis, effluents, salts, and minerals



Does not support fire and provides a good resistance to combustion



Smooth inner surface, free from scaling, rusting and chemical action ensures extended product life



Lightweight, ensuring ease in handling and transportation



Corrosion and rust proof; assures longer durability of the product



Stringent quality control



High degree of accuracy in manufacturing ensures dimensional control

ADVANTAGES OF SWR PIPES & FITTINGS WITH INTEGRATED RINGS



Integrated rings are permanently positioned at the manufacturing stage enabling easy and quick installation



Integrated rings sustain thermal expansion and contraction



The elastomeric EPDM rings ensure hydraulic tightness.



Joints can be easily re-opened for any adjustments if required.



Leak-proof joints



Unlike conventional rubber rings which may slip out of the groove during installation, the pre-fitted ring holds itself and stays attached to the groove by the reinforcement

APPLICATIONS



Waste discharge system in residences, commercial complexes, resorts, hospitals, etc



Venting of gases and odours in domestic plumbing



Rainwater transportation and harvesting for residential and commercial buildings



Non-pressure industrial drainage (based on chemical compatibility)

Finolex Industries Limited

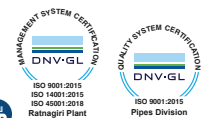
Registered Office:

Gat No. 399, Village Urse, Taluka Maval, District Pune - 410 506. Maharashtra, India.
Tel. No. : 02114 - 237251 | E-mail: investors@finolexind.com
CIN: L40108PN198PLC024153 | Website: www.finolexpipes.com

Corporate Office:

D1/10, MIDC, Chinchwad, Pune - 411 019. Maharashtra, India.
Tel. No. : 020 - 27408200
E-mail: care@finolexpipes.com

Follow us on:     



Disclaimer:

• Specifications are subject to change without prior notice. • The product images shown are for illustration purposes only and may not be an exact representation of the product. • The product images or other information cannot be construed as guarantee or suitability for a particular application. • Warranty applicable only for manufacturing defects when products are installed as per our standard guidelines and usage. • Warranty is not applicable if any other brand's products are used in combination with Finolex products. • In any case, the manufacturer/ seller's liability towards any claim is limited to replacement of, or credit for the defective product excluding any allied or incidental expenses. The manufacturing defect should be brought to notice within 24 months from manufacturing date.